

Specifications

General

| | |
|--|---|
| Frequency Bands | VHF:136-174MHz UHF1:400-470MHz UHF3:350-400MHz |
| Channel Capacity | 1024 |
| Channel Space | 12.5/20/25KHz |
| Dimensions(H*W*D) | 125*54*35mm |
| Weight | 320g (With standard battery and antenna) |
| LCD | 2.0 inch transfective TFT LCD 240x320 pixels, 262K colors |
| Operating Voltage | DC 7.4V |
| Battery | 2400mAh(Li-ion) |
| Battery Life (5-5-90 Duty Cycle, High TX Power) | Analog: 13H(No GPS) 11.5H(With GPS) Digital: 15H(No GPS) 13H(With GPS) |

Transmitter

| | |
|---------------------------------|---|
| Frequency Stability | 0.5ppm |
| RF Power Output | VHF:High 5W Low:1W UHF:High 4.2W Low:1.2W |
| Digital Modulation | 7K60FXD (Data Only) 7K60FXW (Data and Voice) |
| Analog Modulation | 16K ϕ F3E @ 25KHz /14K ϕ F3E @ 20KHz /11K ϕ F3E @ 12.5KHz |
| 4FSK Modulation Accuracy | 5% |
| 4FSK TX BER | 0% |
| 4FSK and Magnitude Error | 5% / 1% |
| Adjacent Channel Power | 70dB @ 25/20 KHz / 60dB @ 12.5 KHz |
| Conducted and Radiated Emission | -36dBm <1GHz / -30dBm >1GHz |
| Transmission Deviation limits | 5KHz@25KHz / 4KHz@20KHz /2.5KHz@12.5KHz |
| Audio Distortion | 3% |
| Hum and Noise | 48dB @ 25KHz / 46dB@20KHz / 43dB @ 12.5KHz |
| Audio Response | +1 ~ -3dB |

Standard Accessories:



Pictures above are for reference only and may vary from actual products.



SHENZHEN EXCERA TECHNOLOGY CO.,LTD.

www.excera.com.cn

Receiver

| | |
|---|---|
| Digital Sensitivity | -120dBm / BER 5% -116dBm / BER 1% |
| Digital Dynamic Faded Sensitivity (100KM/H& 8KM/H Rayleigh Fading) | -104dBm |
| Analog Sensitivity | -120dBm / 12dB SINAD |
| Intermodulation | 70dB (TIA603) 65dB (ETSI) |
| Blocking | 90dB (TIA603 & ETSI) |
| Spurious Response Rejection | 75dB (TIA603 & ETSI) |
| Adjacent Channel Selectivity | 75dB@25 KHz (TIA603) 70dB@25 KHz (ETSI) 70dB@20KHz (TIA603 & ETSI) 65dB@12.5KHz (TIA603) 60dB@12.5 KHz (ETSI) |
| Conducted Spurious Emission | -57dBm |
| Rated Audio Power Output | 1W |
| Rated Audio Distortion | 3% |
| Hum and Noise | 48dB @25KHz / 46dB@20KHz / 43dB@12.5KHz |
| Audio Response | +1 ~ -3dB |
| Digital Vocoder Type | AMBE++ |
| Digital Protocol | ETSI-TS102 361 -1, -2,-3,-4 |

Reliability

| | |
|------------------------|--|
| Operating Temperature | -30 ~ +60 °C |
| Storage Temperature | -40 ~ +85 °C |
| Dust & Water Intrusion | IP67 (IEC60529) |
| Humidity | MIL-STD-810 C/D/E/F/G Standard |
| Shock&Vibration | MIL-STD-810 C/D/E/F/G Standard |
| ESD | IEC 61000-4-2(level 4) ±8KV(Contact) , ±15KV(Air) |

GPS&GLONASS

| | |
|---------------------------------|-----|
| TIFF Cold Start | 60s |
| TIFF Hot Start | 10s |
| Horizontal Positioning Accuracy | 10m |



EXCERA
Innovate to Succeed

DMR Portable Radio EP8100

- ◆ Full Duplex Communications
- ◆ 2.0" HD Transflective TFT LCD Display
- ◆ IP67 and MIL-STD-810 Standard Compliance
- ◆ DMR Tier II Conventional and DMR Tier III Trunking



Advantage Features

2.0" HD Transflective TFT LCD Display

Adopts 2.0" HD transflective TFT LCD display, allowing good visibility even under outdoor strong sunlight.



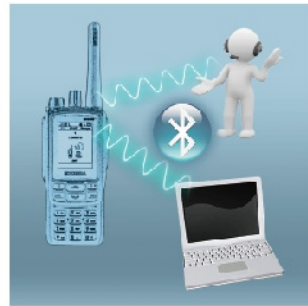
High Capacity Battery Design

Equipped with 2400mAh or 3400mAh high capacity Panasonic Li-ion battery to make sure the radio's usage life.



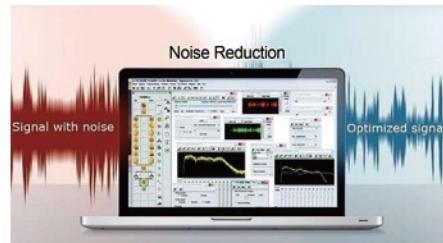
Built-in Bluetooth(Optional)

Equipped Bluetooth inside radio, ensuring the expanding applications such as BT accessories, BT wireless programming and other applications.



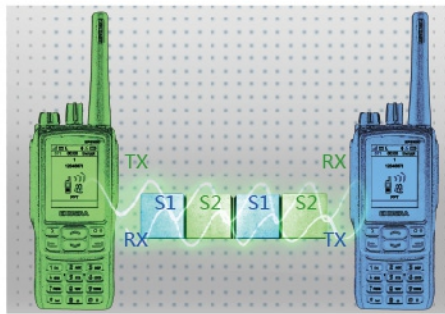
Built-in Noise Reduction Function (Optional)

Featured with advanced noise reduction which makes the noise suppression be up to 25dB.



Full-duplex calling (Optional)

Full duplex calling allows for natural and intuitive communications without push-to-talk(only in trunking mode).



Built-in GPS (Optional)

Supports to view position information and send GPS text messages.



DMR Tier III Support

Supports DMR Tier III just by software upgrade and makes the radio applications more rich and more advanced.



Rich API Support

Rich API supports the user or third party to develop supplemental applications.



Advantage Features

IP67 and MIL-STD-810 Standards Compliance

EP8100 is compliant with the MIL-STD-810-G and IP67 (IEC60529) standard, ensuring outstanding performance even in harsh environment.



Main Functions

DMR Conventional

Radio Function

- > Direct/Repeat Mode
- > SCAN
- > Bluetooth 4.0
- > Audio Feedback Suppression
- > TDMA Direct Mode
- > Multi-site Roaming
- > Excera Capacity Added
- > Vibration

Voice Service

- > Group Call
- > Private Call
- > All Call
- > Emergency Call
- > Broadcast Call
- > Phone call

Data Service

- > Text Messaging
- > Status Messaging

Supplementary Service

- > Call Alert
- > Radio Check
- > Remote Monitor
- > Radio Enable/Disable /Kill

Location Service (optional)

- > GPS
- > Beidou
- > GLONASS

Safety Function

- > DMRA Encryption
- > Transmit Interrupt
- > Lone Worker
- > Man Down

Analog Conventional Signaling

- > CTCSS&CDCSS
- > 5-tone
- > MDC1200

DMR Tier III and MPT Trunking (Software Licensed)

Optional Accessories

| | | | | | | |
|--------------------------------------|--|-----------------------------|--|--|---|--|
| | | | | | | |
| Remote Speaker Microphone EMRN011 | Wireless Remote Speaker Microphone EMRW011 | C Style Earpiece EEHN011 | 1-Wire Earpiece with Transparent Acoustic Tube EEAN011 | 2-Wire Earpiece with Transparent Acoustic Tube EEAN021 | Police Full Bone Conduction Headset EEBN011 | Fireman Full Bone Conduction Headset EEBN021 |
| | | | | | | |
| Bluetooth Headset EEWB03E | Wireless PTT EPTTB01 | 3400 mAh Battery EB342L | Multi-unit Charger EMC702L | Programming Cable EPC01 | Leather Case ELBY01 | |

Excera retains right to change the products design and specification without prior notice. Parts supply for the market is different, please contact the local dealer. Promotional photos are for reference only. All products as per the material subjects.