


## Technical Data

Power Supply.....	12/24V (10.8–30V min/max) negative earth systems
Fuse.....	2 A, 48 V blade fuse
Input voltage.....	10.8 - 30V
Input current.....	2A max
Operating temperature range.....	-25 °C to +75 °C (-13 °F to +167 °F)
Storage temperature range.....	-40 °C to +85 °C (-40 °F to +185 °F)

## Waste Electrical and Electronic Equipment disposal information

 This symbol on the product or its packaging indicates that this product must not be disposed of as household or commercial waste. Some countries have set up collection and recycling systems for waste electrical and electronic products. By ensuring that this product is disposed of correctly, you will help prevent potentially negative consequences for the environment and human health, and help conserve natural resources. Please dispose of your waste product according to your national and local regulations. Contact your service provider or Sepura for information on how to return this product for waste disposal.



**Sapura plc.**  
9000 Cambridge Research Park  
Beach Drive, Waterbeach,  
Cambridge, CB25 9TL  
United Kingdom.

+44 (0) 1223 876000  
www.sepura.com

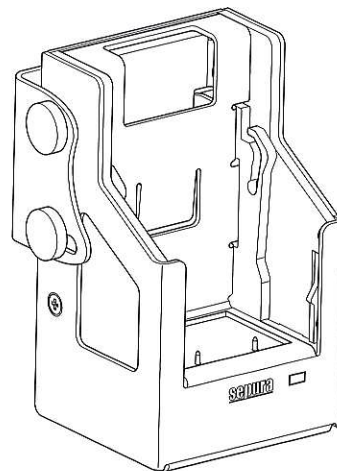
SPR-DOC-03097  
Issue 2.0 (English)



## Installation & User Guide

### STP/SC2 Series Car Kit - Power

Part no. 300-01618



- 2 -

The installation of this product must be performed by a suitably skilled and technical competent person such as a qualified vehicle installation technician. **READ ALL INSTRUCTIONS before attempting to install the product.** If you do not understand the instructions STOP and contact your service provider or Sepura for assistance. This product can be installed into various makes and models of vehicles and therefore these instructions are not a definitive guide to installing the product. Always read the vehicle manufacturer's handbook before starting to install the product. Contact the vehicle manufacturer if you are not certain if it is safe to install this product. **CAUTION!** Prolonged operation of the car kit with the vehicle engine powered OFF may drain the vehicle's battery. Disconnect the vehicle's battery before commencing installation. Ensure that the installation does not impede the normal operation of the vehicle, including the operation of any safety device, such as airbags and seatbelt tensioners. Electronic control mechanisms within a vehicle can be affected by the use of RF energy such as ABS and transmission controls. Always refer to the vehicle manufacturer's instructions and technical information relating to electronic modules and their wiring harnesses before installing an RF wireless device into a vehicle.

## Installation guidelines and recommendations

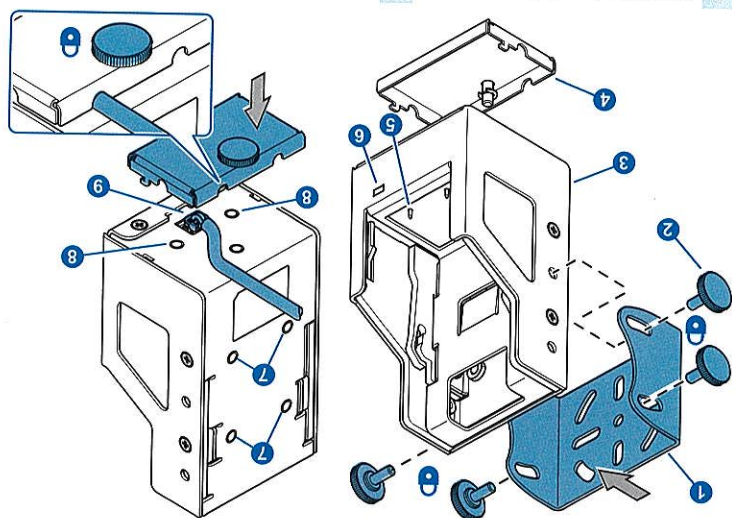
**THIS PRODUCT IS DESIGNED FOR USE WITH SEPURA SC20 SERIES RADIOS ONLY.** The Sepura STP/SC2 Series car kit - Power is a cradle that holds the radio and firmly whilst charging within the vehicle. The car kit can be used with STP and SC20 series hand-portable radios, and with the SC21 series radio when fitted with a Charger Insert (part no. 300-01959). The radio can be placed into the cradle with the "Click Fast" stud or the belt clip attached, with any battery fitted and with an accessory such as the RSM connected to the side RAC connector.

## Introduction

Thank you for purchasing the Sepura STP/SC2 Series Car Kit - Power, for STP and SC2 series hand-portable radios. This product should reach you in good condition. Should you notice any defect or experience any problems with this product, please contact Sepura or your service provider immediately.

- 1 -

5	Pin Contacts
4	Cable Retainer Assembly
3	Cradle
2	Thumb Screws
1	Mounting bracket
6	Red LED
7	M4 screw holes (AMPS compatible)
8	M4 screw holes for alternative mounting bracket
9	Power Socket



- Blade fuse (2 A, 48 V)
- Fuse holder
- Ring terminals 16-22 AWG (x1, red), 14-16 AWG (x1, blue)
- Step down butt splice (x1), AWG 22-18 (end with red strip) to AWG 16-14 (unmarked)

Bag containing:  
1m power cable (Red cable = +12/24 V, black cable = ground)  
Cable Retainer Assembly  
AMPS dashboard mount bracket, with 4 thumb screws (in bag)  
Cradle (boxed)  
Cable Retainer Assembly

## Parts List



Regulatory Compliance

The installation should comply with local radio communications authorities and/or Health and Safety regulations. Installations in the UK must comply with the FCS1362 Code of Practice for the installation of mobile radio and related ancillary equipment in land-based vehicles (see <http://www.fcs.org.uk>).

Location Considerations

Do not install the product within the air bag deployment area. In the event of the air bag inflating, the radio could be propelled at great force potentially causing serious injury. The cradle should be positioned so that it does not obstruct or become at risk of damage from any occupant or carried items. The operator should have unrestricted access to the radio's controls and the display should be visible but not distracting whilst the operator is driving. The cradle must not prevent the operator from driving the vehicle safely.

Avoid mounting near heat sources such as ventilation vents, or positions which may expose the cradle to moisture.

Choose a fitting position which minimises the risk of RF interference between the TETRA radio—or the cradle power supply lead—and the vehicle's existing wiring harness.

Cabling

All cabling should be hidden and not left loose.

Ensure the cables do not rub against sharp edges and are not subjected to undue stress.

It is recommended that the power cable runs are kept as short as possible. Wherever possible fit the cable retainer assembly which helps protect and route the power cable.

The positive power line must include a fuse as close as possible to the power source. A 2A fuse (supplied) must be connected between the cradle and the vehicle's fuse box (which must also protect the cradle with a 2A fuse). Use the Step Down Butt splice to connect the power cable (red wire) to the fuse holder ('marked' end of the butt splice is fitted to the fuse holder wire).

The negative power line must be connected close to the battery-to-vehicle-body connection (not directly to the battery) and must not include a fuse.

Connect the Power cable to the connector on the base of the cradle. Fit the cable retainer assembly to the base of the cradle.

The car kit powers on automatically when the radio is inserted. Charging takes place even if the radio is powered off.

To remove the radio, tilt the radio to one side to disengage the clips, then lift the radio from the cradle. The car kit powers off automatically when the radio is removed. When powered off, the car kit draws negligible power from the vehicle's battery.

Status Indications

Cradle LED	Description
On	Radio inserted correctly and power present
Off	No radio fitted, or radio incorrectly fitted, or no power present.

Care and cleaning

Clean the connectors periodically using a cotton bud, a soft brush or a lint free antistatic soft cloth. Do not use liquids.

Safety Information

Handle the device with care. The following will help you protect the device and protect your warranty coverage:

**Risk of fire!** Do not cover. Only operate this product in a well ventilated area away from combustible materials.

Do not attempt to dismantle or modify this product. There are no user-serviceable parts inside. Unauthorised modifications could cause the product to become non-operational and will invalidate the product safety ratings and product warranty.

Never operate the product if it shows signs of damage. Never attempt to charge a battery that shows signs of damage.

Only use Sepura radios and Sepura approved batteries with this product. The use of non-approved batteries may damage the product, will result in the non-compliance with regulatory requirements, compromise the product safety ratings and invalidate the product warranty.

Do not exceed operating and storage temperature limits.

Do not expose to direct sunlight or direct heat. Prolonged exposure to extreme temperatures (over 55 °C / 131 °F), for example behind glass in direct sunlight, may damage the product.

Do not immerse into water or expose to moisture.

Mounting the Cradle

The cradle should be attached to the vehicle's interior in a convenient position. It is recommended to use the AMPS dashboard mount bracket and secure using the four thumb screws (supplied), or an alternative standard AMPS bracket may be used.

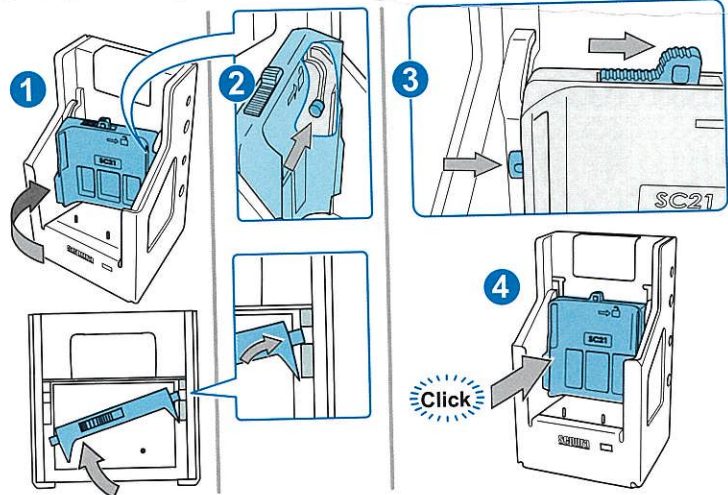
**CAUTION!** Do not mount the cradle in a position exposed to extreme sunlight; the sides of the cradle may become hot.

Operation

**CAUTION!** If the radio is fitted with a belt clip, lift it before you insert or remove the radio.

**CAUTION!** Prolonged operation of the car kit with the vehicle engine powered off, may drain the vehicle's battery.

**Note:** when charging the SC21 series hand-portable radio, a Charger Insert (part no. 300-01959) must be fitted to the cradle. Follow the instructions below to correctly fit the insert. An audible click is heard when the insert is securely seated in position.



Lower the radio into the cradle and push down lightly to fully engage with the facility socket at the bottom of the cradle. The charging LED on the car kit will illuminate when the radio is correctly seated on the facility connector.

Battery Use Guidelines

Always follow the warning information on the battery label and in the user manual provided with the charging device.

**NEVER** use or attempt to charge a battery that shows signs of damage or swelling, or has been dropped or received a 'heavy blow'. Damage to the battery may not always be obvious.

Take care when handling and charging batteries. Do not short-circuit batteries. Avoid deep discharge of the batteries.

Do not open or disassemble batteries.

Do not incinerate batteries or expose to temperatures above 85 °C (185 °F).

Do not immerse batteries into water or expose the battery contacts to moisture.

Do not swallow batteries.

Only use an approved Sepura charging device to charge the battery, in accordance with the specifications of the charging device.

Sepura recommends that charging is only performed at an ambient temperature between +5 °C and +35 °C (41 °F and 95 °F).

Charging will be suspended when the internal battery cell temperature is below +5 °C (41 °F) or above +45 °C (113 °F).

Rechargeable batteries have a limited number of charge cycles and may eventually need to be replaced. We recommend replacing batteries every two years or after 500 charge cycles.

Use original packaging for storage and transportation of batteries. Storage of unpacked batteries can cause short circuit and heat generation.

Do not store near heating devices. Avoid direct sunlight. Storing at higher temperatures may reduce the electrical performance of the battery.

To achieve best battery performance, store batteries in a cool dry place below +20 °C/68 °F. Store at temperatures listed below:

Up to 1 month: ..... -20 °C to +45 °C (-4 °F to +113 °F)

Up to 3 months: ..... -20 °C to +35 °C (-4 °F to +95 °F)

More than 3 months: ..... -20 °C to +25 °C (-4 °F to +77 °F)

Do NOT store fully charged batteries. After 6 (six) months storage, charge batteries for 36 minutes. Thereafter, recharge for 36 minutes every 6 months. Failure to store batteries correctly could lead to reduced capacity and reduced battery life and in extreme circumstances damage to or complete failure of the battery.